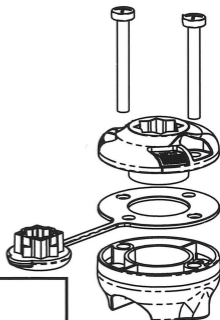


RailMount19-25

- 1) Assemble the RailMount as shown and if using grip tape leave for 12 hours before applying full load.
- 2) Because rails come in different diameters, the RailMount 19-25 comes with plastic and rubber inserts. Plastic insert is used for 19mm rails only.

19-25mm Installation



Plastic insert
(19mm only)



Rubber insert



Push nuts into recesses

RailMount32-41

The RailMount32-41 is used for rails from 32-41mm (1.25-1.6 in) rails, round or square. Mounting to rails is very similar to the RailMount19-25 (above), with these additions:

- 1) To fit a 32mm round rail: Use NO spacers; both rubber inserts and grip tape optional.
- 2) To fit a 32mm square rail: Use ONE spacer pair and one rubber insert.
- 3) To fit a 41mm round rail: Use TWO spacer pairs, both rubber inserts, grip tape optional.

41mm Round Rail installation

